



OUR LADY OF THE PRAIRIE CATHOLIC CHURCH

WEEKEND MASSES

Saturday: 4:15 p.m.

Sunday: 8:00 a.m., 10:00 a.m., and 6:00 p.m.

WEEKDAY MASSES

Monday: 11:00 a.m.

Tuesday, Wednesday & Friday: 8:30 a.m.

Consult bulletin for special Holy Day
and holiday schedules.

SACRAMENT OF CONFESSION

Conversion & Reconciliation

Saturday: 3:00 p.m. - 4:00 p.m.

Sunday: 7:00 a.m. - 7:45 a.m.

Monday: 11:30 a.m. - 12:15 p.m.

Tuesday: 7:30 a.m. - 8:30 a.m.

Wednesday: 6:00 a.m. - 7:00 a.m.

First Friday: 3:00 p.m. - 8:00 p.m.

EUCCHARISTIC ADORATION

Tuesdays & Wednesdays:

9:00 a.m. - 11:00 p.m.

Thursdays: 6:00 p.m. - 11:00 p.m.

OFFICE HOURS

Weekdays: 8:30 a.m. - 3:00 p.m.

CHRISTIAN MARRIAGE:

*Make arrangements with Parish Office
six months prior to tentative date.*

BAPTISMS:

Congratulations! Thank you for accepting and caring for one of God's greatest gifts. As part of Baptism preparation, expectant parents are required to attend Mass weekly. Please speak to Fr. Brian Lynch after Mass during the second trimester of pregnancy to begin the formal preparation process. We look forward to getting to know you and your baby.



200 East Church Street • Belle Plaine, Minnesota 56011
952.873.6564 • www.ourladyoftheprairie.com

THOUGHTS FROM Deacon Bob**FIVE GOALS FOR CATHOLIC GRANDPARENTS**

We are all called to be a model of Christ to and for our families. Although parents are the most important teachers in a child's life, the grandparents also have a role to play.

1) Teach them compassion. The more we can show our grandchildren how to be compassionate, the more we will lead them closer to God. Listen to them when they want to talk about their feelings. It is good to help our grandchildren become more aware of their own feelings and also the feelings of others that they come in contact with each and every day.

2) Be ready to serve. Today's families need our support more than ever because sometimes both parents are working out of the home. It is one way to carry out the Corporal Works of mercy. We may feed them, we may help dress them, and may even stay with them when they are sick and cannot go to school or to daycare.

3) Show them love of nature. They often spend long hours in daycare facilities or in classrooms. Maybe take them out at night and look up in the sky to see all the stars, the moon, the Big Dipper, etc. If you have bird feeders, they may see so many different kinds of birds feeding and if you have a book about birds they may be able to tell which one is which. When we expose our grandchildren to nature, we expose them to God.

4) Respect their parents' wishes. One of the hardest jobs for a grandparent might be to keep our mouths shut. Today's parents need to determine how to raise their children through a raging sea of new technologies, advanced medical research, alarming social trends, and demanding expectations. Unless a life of a grandchild is in danger, grandparents must respect the wishes of the parents.

5) Help them to be content. One lesson to teach our grandchildren is the difference between need and want. Sometimes our grandchildren will tell us that they need something---like a new toy, a snack, new clothes, etc. Our first question for them should be: "do you need it or do you want it?" Most of us need very little.

I read where this mother permitted her children to have only 3 toys. When shopping, if they wanted another toy, she asked them: "OK--which one do you want to give up?" She made them realize just what was their need or want. This could be a lesson for all of us--do we really need it or do we just want it?

PEACE,
Deacon Bob Raleigh

PARISH DIRECTORY

Pastor, Rev. Brian Lynch - blynch@olp.church
Robert Raleigh - Deacon - 952-873-6688

PARISH OFFICE, 952-873-6564

Office Hours: Monday - Friday 8:30 - 3:00pm
Kris Koehler - Business Administrator
Kelly Pumper - Administrative Assistant

OLP SCHOOL & LITTLE PRAIRIE PRESCHOOL, 952-873-6564

Wendi Alessio - Principal of Parish School, Preschool Director

FAITH FORMATION, 952-873-6564

Patrick Schroers - Youth/Religious Education Coord.
Loree Heinkel - Religious Education Assistant

LAY LEADERSHIP POSITIONS:**Trustees**

Charlotte Mulroy
Sue Schultz

Finance Council

Kevin Berger
Jerome Flaherty
Tammy Kottke
Lisa May
Dawn Skluzacek

Parish Council

Joan Bruggemeier
Maureen Daly
Jim Gerres
Julie Lenz
Rick Morgan

Joe Murphy
Sandy Schroers
Renee Schultz
Chuck Valek

Prep Board

Rebecca Rupp
Sarah Williamson

School Advisory Council

Michele Giles
Rose Kolden
Ashley Simons
Kristen Strauss
Joe Vandermark

PLEASE JOIN US!

The Catholic Church is the Church founded by Jesus Christ; it is the same Church mentioned in the New Testament of the Christian Bible. The term "Catholic" means "according to the whole;" it was used early in the Church's history to distinguish her from a number of other gatherings whose teachings and practices were not true to the authoritative teachings of Christ's apostles. All human persons are invited and encouraged to accept the salvation offered by Jesus through His one, holy, catholic and apostolic Church by living the sacramental life offered by the Catholic Church. It is the mission of Our Lady of the Prairie Catholic Church to offer this life to the people of Belle Plaine, Minnesota and its environs.

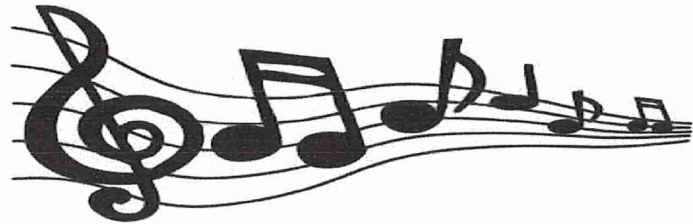
If you would like to become Catholic, please contact Fr. Brian Lynch in person or by email at Blynch@olp.church.



OLP CHOIRS

Join us for our 2nd Annual

CHILLIN' and GRILLIN'



Wednesday, August 22nd @ 5 pm

1042 Pinehurst Lane - Jordan

We will provide hamburgers/brats & water.

Spouses and kids are welcome!

Please bring a side or dessert to share,

your beverage of choice,

and your lawn chairs.



RSVP by August 15, 701.212.3109 (Ginny Morgan)

Our Gifts to the Lord

Weekly Collection Goal for July 2018	\$6,735.00
7/22/18 Collection Week 4	\$5,097.96
Total Contributions July 2018 – to date	\$26,272.71
Contribution Goal for July 2018 – to date	\$26,940.00
Budget Deficit	\$667.29
Number of registered Families	552

Did you know your contributions can be automatically deducted from your checking, saving or credit card account? For more information call the parish office 952-873-6564 or check out our website ourladyoftheprairie.com

Please remember Our Lady of the Prairie in your will & other estate planning.

Calendar of Events

- Sunday, July 29, 2018**
- Catholic United Financial Mass & Breakfast 8am
- Thursday, August 2, 2018**
- CCW Meeting 7:00pm
- Friday, August 3, 2018**
- First Friday, 3:00pm Chaplet, 3:00pm - 8:00pm
Confessions, 6:30pm Stations of the Cross
- Saturday, August 4, 2018**
- Sign-Up Sunday after Mass
- Sunday, August 5, 2018**
- Sign-Up Sunday after all Masses
- Tuesday, August 7, 2018**
- Knights of Columbus Meeting 7:00pm
- Liturgy Committee Meeting 7:00pm
- Sunday, August 12, 2018**
- Marriage Encounter 7:00pm
- Wednesday, August 15, 2018**
- Assumption of Mary - Mass Times: 6:30am, 8:30am, & 6:00pm
- Monday, August 20, 2018**
- Baptism Class 6:30pm, Gathering Space
- Wednesday, August 29, 2018**
- Back to school picnic 5:00pm

Welcome Visitors and Guests

If you have just moved into our community, we encourage you to register as members of our parish. To do so, please call the office during normal business hours 952-873-6564 or visit our website at www.ourladyoftheprairie.com and go to *Register on the home page.

Ministry Schedule

Aug. 4-5

	4:15 p.m.	8:00 am.	10:00 am.
SERVERS:	Server Crew	J. Teal Aiden T.	M. Daly S. Schroers

USHERS:	D. Schumacher N. Schumacher	B. Smith R. Soller J. Soller J. Edberg	H. Jeurissen J. Klein J. Miller P. O'Brien
----------------	--------------------------------	---	---

LECTORS: C. Schultz S. Schmitz S. Schroers

EUCCHARISTIC MINISTERS:

Deacon Bob R. Koepf K. Heitkamp J. Hartmann B. Weldon	Deacon Bob S. Schmitz L. Doheny T. Kottke S. Cole	Deacon Bob M. Daly J. Palo A. Bartolomei J. Vandermark J. Covington
---	---	--

EUCCHARISTIC MINISTER FOR SHUT-INS:

Mary Klehr 952-873-6760
 Karen Brenke, Jeanette Gloege, Pat Krant

Greeter Ministry

August 5

8 AM - Bill & Lynn Doheny
 10 AM - Joe & Kristin LaJeunesse

Mass Intentions

Mon. (30) 11:00 am - d. Alice Savage
 Tue. (31) 8:30 am - d. Mae Betty Hess
 Wed. (1) 8:30 am - d. Ronald Hennen
 Fri. (3) 8:30 am - liv. & d. Mem of Bill Kliefoth Fam.
 Sat. (4) 4:15 pm - d. Jenny Wolf-Compton
 Sun. (5) 8:00 am - d. Patrick Savage
 10:00 am - For the Parish
 6:00 pm - d. Carol Bigaouette-Smith

Readings For The Week Of July 30, 2018

MONDAY	Jer. 13:1-11;/Matt. 13:31-35
TUESDAY	Jer. 14:17-22;/Matt. 13:36-43
WEDNESDAY	Jer. 15:10;/Matt. 13:44-46
THURSDAY	Jer. 18:1-6;/Matt. 13:47-53
FRIDAY	Jer. 26:1-9;/Matt. 13:54-58
SATURDAY	Jer. 26:11-16;/Matt. 14:1-12
SUNDAY	Exod. 16:2-4;/Eph. 4:17;/ John 6:24-35

Kolden 952-873-6227
FUNERAL & CREMATION SERVICES
Karl & Rosemary Kolden
www.koldenfuneralhome.com

CHARD P (952) 873-6152
F (952) 496-0024
An Oldcastle® Company

RENEE SCHULTZ, Owner/Provider
952.873.4339
C: 952.200.0518
Rainbow Discovery Center
Preschool/Daycare/Latchkey
613 East Main Street ~ Belle Plaine, MN 56011

STATE BANK
OF BELLE PLAINE
People you know. Bankers you trust.
Your life is MOBILE, so are we!
-Monitor accounts
-Manage your money
-Pay your bills
-AND ... Make deposits!
When your phone is on, your bank is on!
952.873.2296 • statebankbp.com
201 W Main St., PO Box 87, Belle Plaine
Equal Housing Lender Member FDIC

BELLE PLAINE FAMILY DENTISTRY, P.A.
Steven B. Petersen, D.D.S.
Henry D. Watzl, D.D.S.
General Dentistry
210 North Meridian Street
Suite 2
Belle Plaine, MN 56011
Fax 952.873.5675 ~ 952.873.2796

SIBLEY
AGGREGATES
An Oldcastle® Company
Scale (952) 873-6326

Allen Schmitz
Realtor®, GRI, Broker Associate
612.483.1781
AllenSchmitzRealtor@gmail.com
1221 4th Ave. E., Suite 100
Shakopee, MN 55379
Office: 952.445.9110
Fax: 952.445.9118
Full Service REALTOR®
115 1st Ave. SE, Suite 220
New Prague, MN 56071
Office: 952.758.9110
Fax: 952.758.9118
www.KubesRealty.com

BRAD'S BARBERSHOP
106 S. MERIDIAN ~ BELLE PLAINE
(952) 873-6700
All Kids Haircuts (19 and under) ~ \$800
Adults ~ \$125 / Seniors ~ \$115

RIVERS EDGE
CONCRETE
An Oldcastle® Company
(952) 873-3513
Belle Plaine, Prior Lake & Farmington, MN
26239 State Hwy 25 Belle Plaine, MN 56011
www.oldcastlematerials.com
www.chardtiling.com

STRAIT SMILES
FAMILY DENTISTRY
Dr. Tasha Strait, General Dentist
Dr. Monique Baune, General Dentist
Dr. Mora Cervenka, General Dentist
Dr. Jason Anderson, Orthodontist
New Patients Welcome - Dentistry for the entire family
952-873-6380

Daly & Daly Inc.
Tax and Accounting Services
Michael J. Daly
Daly Office Building - 119 W. Main Street - Belle Plaine
Office: (952) 873-2213 Fax: (952) 873-4237
E-mail: daly@daly@frontiernet.net
Securities offered through Signature Investors, Inc.
A registered Broker/Dealer. Member FINRA & SIPC

Neisen's Red Door Bar
125 N. Meridian
Belle Plaine, MN 56011
952-873-6305

Neisen's Corner Bar & Rustic Room
101 E. Main Street
Belle Plaine, MN 56011
952-873-6810

Gopher
Heating & Air Conditioning
507-665-3300

PRAIRIE FARM SUPPLY
952-873-4234
115 W. Church, Belle Plaine

Belle Plaine (952) 873.6577
St. Peter (507) 519.1135
BERGER INTERIORS
FREE DELIVERY
FREE ESTIMATES
bergerinteriors.com
Like us on f
FURNITURE | FLOORING | WINDOW TREATMENTS | COUNTERTOPS | MATTRESSES | CABINETS

Angie's Infant & Toddler Daycare
M-F 6am - 6pm
617 East Main Street ~ Belle Plaine, MN 56011
952.873.3951
www.angiesdaycarebp.com

WAGNER FUNERAL HOME
Joe Wagner, Director
Belle Plaine - Jordan
952-873-3424 * 952-492-3866
Luncheon Space Available

CORNERSTONE STATE BANK
Providing:
Business & Commercial Loans
Vehicle & Personal Loans
Home Loans
"We Service Your Loan From Application to Payoff"
Matt Fogarty, President
Belle Plaine • 952.873.2500
LeSueur • 507.665.4200 | Green Isle • 507.326.3200
Cloquet • 218.879.6781 | Montgomery • 507.364.2265
Eagle Lake • 507.257.3544 | Madison Lake • 507.243.3511
Member FDIC
www.cornerstonestatebank.com

ASHTON PANKONIN
Financial Advisor
KMF Advisors
-Keep Moving Forward-
106 E Main St. Ste 104 ~ Belle Plaine, MN 56011
952.873.2703
507.221.0425 Cell / 507.665.5289 Fax
ashton.pankonin@focusfinancial.com
www.kmfadvisors.com
A Financial Planning Practice of FOCUS FINANCIAL®
Securities offered through Royal Alliance Associates, Inc., member FINRA/SIPC. Insurance and investment advisory services through Focus Financial Network, Inc., a registered investment advisor not affiliated with Royal Alliance Associates, Inc. KMF Advisors is a marketing designation only.

MATT SAXE-CHEVROLET-BUICK
"YOU'LL LIKE OUR ATTITUDE"
952.873.2234
909 ENTERPRISE DRIVE
BELLE PLAINE, MN 56011
WWW.SAXECHEVYBUICK.COM

RE/MAX EXPERIENCE
SW Metro Sales Group
Each office independently owned & operated.
117 E. Main St. Belle Plaine
Mark & Tammy Kottke & Heidi Schmidt
Profit from our 20+ yrs Experience!!
612.400.3257 Tammy / Tammy@swmetrosalesgroup.com
612.382.4510 Mark / Mark@swmetrosalesgroup.com
612.518.5443 Heidi / Heidi@swmetrosalesgroup.com
• Realtors • Appraiser • Investment Counseling • Buying • Selling • Investing
952-873-3388
Servicing the entire SW Metro Areas!!

EMMA KRUMBEES
Homemade Food & Family Fun
Restaurant Floral General Store Orchard
www.emmakrumbees.com
Like us on Facebook!
Hwy. 169 ~ Belle Plaine
952.873.3006 / Floral 952.873.2970

NORTH AMERICAN SAFETY
Buy 5 Get 1 FREE
Class 2 black bottom t-shirt \$11.50 (2001B)

OUR LADY OF THE PRAIRIE CATHOLIC SCHOOL AND LITTLE PRAIRIE PRESCHOOL
"Nurturing a spirit of wisdom & the light of Christ!"
Licensed Preschool - Serving children ages 3, 4 & 5
All Day Kindergarten - Hands-on, multiage environment
1st-6th Grade - Multiage environment where students are challenged to reach their full potential in small class sizes.
Enrichment through art, music, physical education, technology, band and service. Daily faith integration through prayer, Mass, and Adoration.
Openings in Preschool through 6th grade!
Call to arrange a visit today!
Scholarships available.
(952) 873-6564 † ourladyoftheprairie.com

North American Safety
326 S Ash St - Belle Plaine 56011
www.OrderSafety.com
1-800-556-6581